

Wrightwood 659 Announces Fall 2025/Winter 2026 Exhibitions

On View October 3, 2025 – December 20, 2025

Scott Burton: Shape Shift

This fall Wrightwood 659 examines the legacy of Scott Burton (1939–1989), an American original whose wide-ranging practice anticipated many of the strategies of today’s art. Hailed as a landmark exhibition when it premiered at the Pulitzer Arts Foundation in St. Louis, MO, *Scott Burton: Shape Shift* is the most comprehensive exhibition of Burton’s work ever mounted in the United States. Featuring works from the 1960s to 80s, the exhibition underscores the breadth of the artist’s vision. By the time of his death at the age of 50 from an AIDS-related illness, Burton had functioned as sculptor, public artist, performance artist, choreographer, art critic, and exhibition curator. The survey spans Burton’s career, featuring nearly 40 sculptures, more than 70 photographs and ephemera, and the only known extant video of the artist’s performance work. In conjunction with *Scott Burton: Shape Shift*, Wrightwood 659 will host a performative-meditation on Burton’s practice, care, and passing time by artist Gordon Hall, the founder of the Center for Experimental Lectures, and a talk by art historian David Getsy, whose book *Queer Behavior: Scott Burton and Performance Art* was released in 2022 by the University of Chicago Press.



Scott Burton: Shape Shift is organized by the Pulitzer Arts Foundation, St. Louis, and curated by Jess Wilcox, independent curator, and Heather A. Smith, Assistant Curator, Pulitzer Arts Foundation. The exhibition is presented at Wrightwood 659 by Alphawood Exhibitions.

The Joffrey + Ballet in the U.S.

The Joffrey + Ballet in the U.S. is a large-scale exhibition celebrating the rich history of The Joffrey Ballet. The exhibition premiered at The New York Public Library for the Performing Arts at Lincoln Center in 2024, marking the first major retrospective of the company. Drawing from the Joffrey archive, acquired

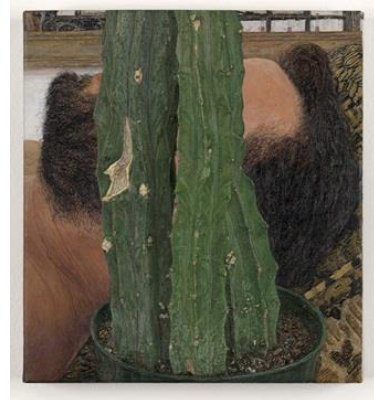


by the Jerome Robbins Dance Division in 2017 as the Library's largest acquisition in a decade, the exhibition offers an in-depth look at the Joffrey's contributions to ballet in the U.S. Highlights include rare film from the original performance of the groundbreaking ballet *Astarte* and Anna Sokolow's *Opus 65*, as well as costumes, props, pointe shoes, posters, correspondence, and other ephemera from the company and the life of Robert Joffrey.

The Joffrey + Ballet in the U.S. is organized by The New York Public Library for the Performing Arts and curated by Dr. Julia Foulkes with assistance from Nicole Duffy. It is presented at Wrightwood 659 by Alphawood Exhibitions.

Ellen Altfest: Forever

Ellen Altfest: Forever is a selection of oil paintings by the American representational painter. Featuring some 14 oil paintings, the exhibition includes still lifes, landscapes, and the human body created over the last two decades. Altfest paints directly from observation, often working on a single painting over the course of months or years. In meticulously rendering the surface qualities of objects that she feels have been overlooked in art and life—from the rough textures of rocks and tree bark to expanses of men's skin and hair—her close looking and technical virtuosity yield a near hallucinatory clarity. *Forever* is inspired by Emily Dickinson's line "Forever – is composed of Nows," an encouragement to live mindfully in the present.



Ellen Altfest: Forever is organized by the Frist Art Museum, Nashville, Tennessee, and is curated by Mark Scala, Chief Curator, Frist Art Museum. *Ellen Altfest: Forever* is presented at Wrightwood 659 by Halsted A&A Foundation.

About Wrightwood 659

Wrightwood 659 hosts exhibitions on socially engaged art and architecture, on issues facing LGBTQ+ communities, and on Asian art and architecture. Located in Chicago's Lincoln Park neighborhood in a building transformed by Pritzker Prize winner Tadao Ando, Wrightwood 659 encourages visitors to engage with pressing issues of our time in an intimate and beautiful space. For additional information, please visit wrightwood659.org.

Hours of Operation and Tickets

Fridays 12 noon-7 pm; Saturdays 10 am-5 pm. Admission is \$15 and is available online only at <https://tickets.wrightwood659.org/events>. Please note, admission is by advance ticket only. Walk-ups are not permitted.

For additional information and images, please contact:

National Media Contact | Ennis O'Brien

Betsy Ennis: betsy@ennisobrien.com | +1 917.783.6553

Stephanie Markovic: stephanie@ennisobrien.com | +1 347.628.4688

Anne Edgar: anne@anneedgar.com | +1 646.567.3586

Chicago Media Contact | The Silverman Group

Beth Silverman: beth@silvermangroupchicago.com | +1 312.560.4783

Louise Yingduo Liu: louise@silvermangroupchicago.com | +1 312.961.9290

PHOTO CREDITS:

Scott Burton, *Section III. Sexual Presentations [alternating aggressive and passive]*, 1980. Gelatin silver print, 7/8 x 1 7/16 inches (2.2 x 3.6 cm), Scott Burton Papers, II.87. The Museum of Modern Art Archives, New York. © 2024 Estate of Scott Burton/ Artist Rights Society (ARS), NY, Digital Image © The Museum of Modern Art/Licensed by SCALA / Art Resource, NY

The Joffrey at Wolftrap, Virginia, c. 1970s. Photograph by Herbert Migdoll © Joffrey Ballet. Jerome Robbins Dance Division, The New York Public Library for the Performing Arts.

Ellen Altfest, *Head and Plant*, 2009-2010. Oil on canvas, 11 x 10 in. (27.9 x 25.4 cm). © Ellen Altfest. Photo © White Cube (Christopher Burke, New York)